

Grangeville Interagency Dispatch Center

9/22/2023

Preparedness Levels

GVC Zone: **1** NRCC: **2** National: **3**
 River Canyons: **1** Northern Timberlands: **1**
 Midlands: **1** Southern Timberlands: **1**

Staffing Levels

GVC Zone: **1** River Canyons: **Yellow (2)** Northern Timberlands: **Green (1)**
 Midlands: **Green (1)** Southern Timberlands: **Green (1)**

Response Levels

River Canyons: **Yellow (2)** Northern Timberlands: **Green (1)**
 Midlands: **Green (1)** Southern Timberlands: **Green (1)**

Adjective Fire Danger Rating (Smokey's Arm)

River Canyons: **Moderate** Northern Timberlands: **Low**
 Midlands: **Moderate** Southern Timberlands: **Moderate**

Daily Fire Danger 9/21/23 at 13:00 (DAVG)

	Wind SP	WDY FM	HRB FM	1H FM	10 H FM	HU FM	TH FM	IC	SC	ERC	BI
River Canyons	4	65	38	26	30	13	12	0	0	0	0
Midlands	3	84	66	25	29	12	13	1	2	26	14
Northern Timberlands	3	75	54	18	23	19	19	3	2	17	15
Southern Timberlands	2	73	49	24	28	17	17	2	1	16	10

Forecasted Fire Danger 9/22/23 (DAVG)

	Wind SP	WDY FM	HRB FM	1H FM	10 H FM	HU FM	TH FM	IC	SC	ERC	BI
River Canyons	3	66	39	18	24	20	13	0	0	0	0
Midlands	3	84	68	19	24	19	14	2	3	26	23
Northern Timberlands	4	76	54	19	24	22	19	1	2	14	15
Southern Timberland	4	76	54	19	24	22	19	1	2	14	15

Fire Weather Planning for Wrn Montana & N Cntrl Idaho:

Idaho: Persistent light to moderate rainfall is expected today across the northern districts of the Clearwater NF, such as the North Fork, Powell, and the eastern portions of the Palouse. Expect wetting rains in these locations and there is around a 25-30% chance for these areas to receive up to 0.25" through this evening. All other districts will see scattered rainshowers, with isolated pockets receiving a wetting rain. Temperatures today will run around 10 to 15 degrees below normal for this time of the year. Saturday through Monday will bring a slight warming and drying trend, with seasonable temperatures. Patchy fog can be expected for the next few mornings. Ensembles show a cold front on Tuesday into Wednesday that will bring breezy conditions and a chance for showers.

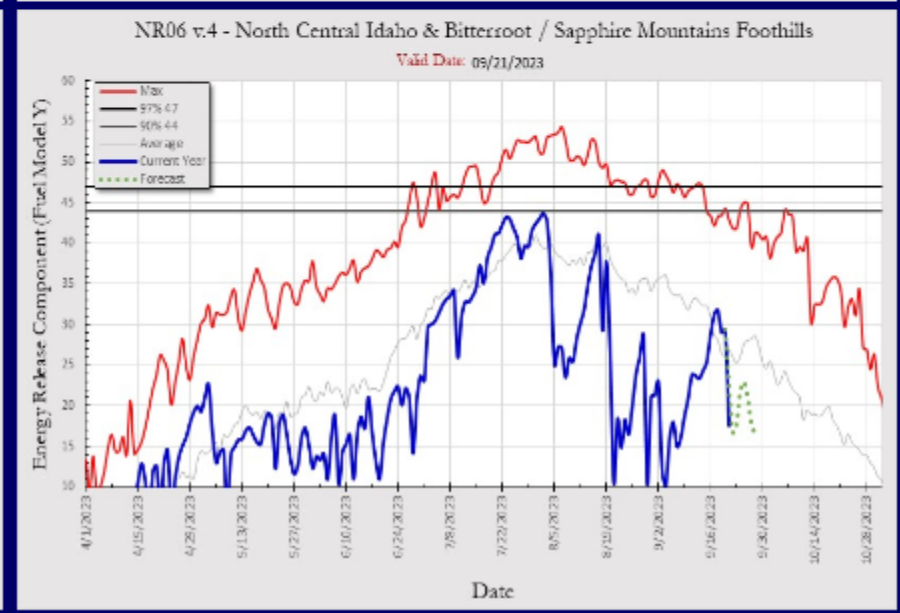
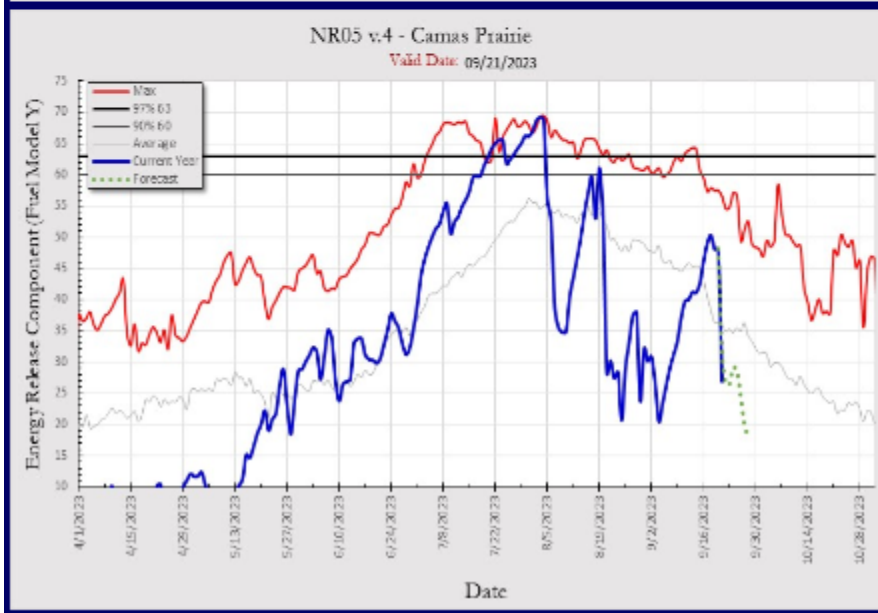
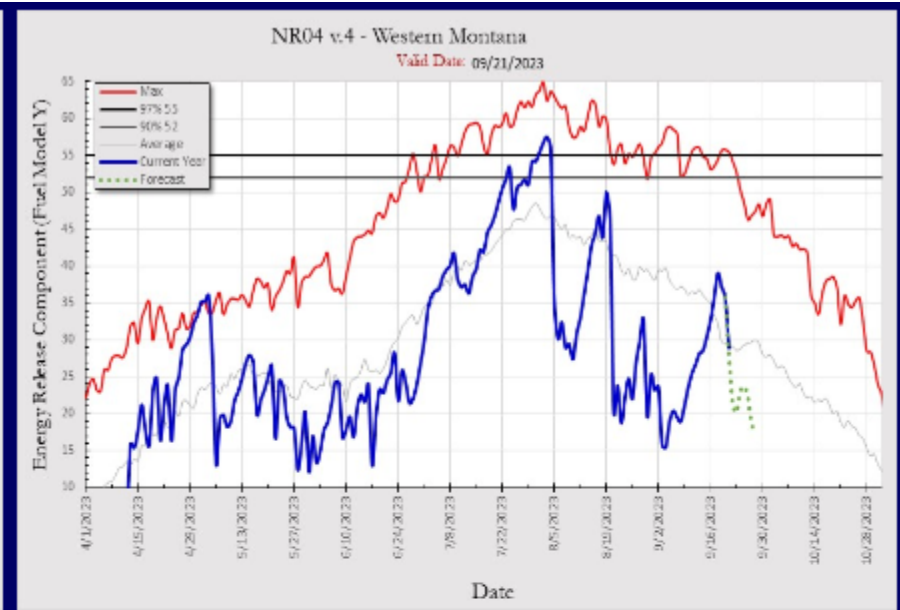
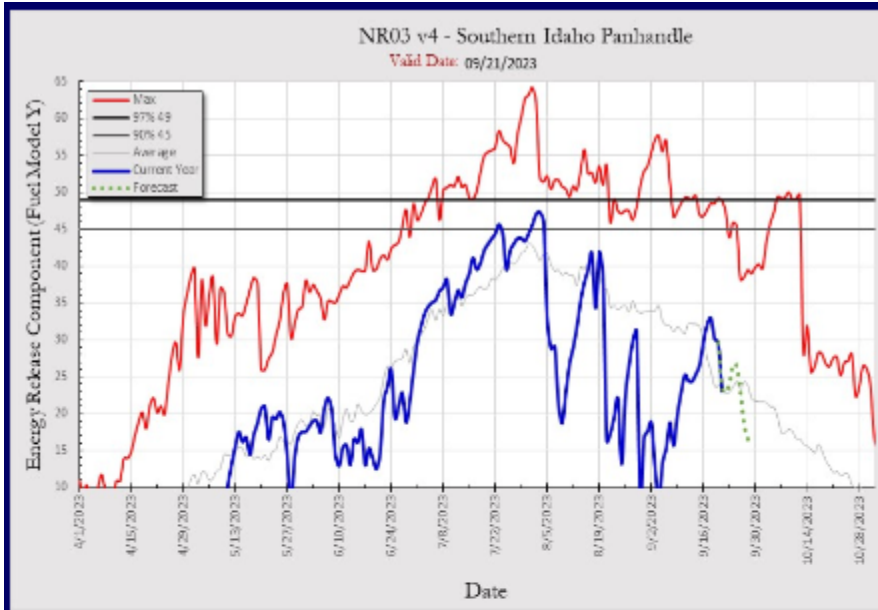
Montana: Persistent light to moderate rainfall is expected today across the West/East Lolo and the Bitterroot NF as well as the Pintlar and Butte Districts of the Beaverhead-Deerlodge NF. Wetting rains are expected for these locations, and there is a 30-50% chance these locations will receive 0.25" of rainfall through Saturday morning. The Flathead NF will have a decent chance for a wetting rain as well, but the Kootenai, not so much, where there is a low probability of a 10-15% chance. Temperatures today will run around 10 to 15 degrees below normal for this time of the year. Saturday through Monday will bring a slight warming and drying trend, with seasonable temperatures. Patchy fog can be expected for the next few mornings. Ensembles show a cold front on Tuesday into Wednesday that will bring breezy conditions and a chance for showers.

NRCC Morning Weather Briefing

https://firenet365.sharepoint.com/:v:/s/NRCC_Staff/Ef_WMT55roxKsSD9hXuBhnEBEY12M2c4xR2N2xmU14t8DA

Predictive Service Area Graphs

https://gacc.nifc.gov/nrcc/predictive/fuels_fire-danger/graphs/erc_tiled.htm



7-Day Significant Fire Potential

<https://fsapps.nwcg.gov/psp/npsg/forecast/#/outlooks?state=forecast&gacclid=5>

NATIONAL 7-DAY SIGNIFICANT FIRE POTENTIAL
Login

Home Forecast Data and Map Services Forecast Static Maps

Geographic Area

National

Alaska

California North Ops

California South Ops

Eastern Area

Great Basin

Northern Rockies

Northwest

Rocky Mountain

Southern Area

Southwest

Parameters:

Published: Sep 22, 2023 8:07:19 AM MT

Predictive Service Area (PSA)	Thu 21 Sep	Fri 22 Sep	Sat 23 Sep	Sun 24 Sep	Mon 25 Sep	Tue 26 Sep	Wed 27 Sep	Thu 28 Sep
NR01 - Northern Panhandle								
NR02 - NW Montana								
NR03 - Southern Panhandle								
NR04 - West Montana								
NR05 - Camas Prairie of Idaho								
NR06 - N. Central Idaho & Bitterroot/Sapphire Mountains								
NR07 - Glacier NP and Wilderness								
NR08 - Southwest Montana West of the Continental Divide								
NR09 - Big Hole SW Montana East of the Continental Divide								
NR10 - Northern Front Range								
NR11 - West Central Montana								
NR12 - South Central Montana and Yellowstone NP								
NR13 - Northern Plains Missouri Breaks								
NR14 - Southern Montana (Big Horn/Powder River)								
NR15 - Northeast Montana and Northwest North Dakota								
NR16 - Southeastern Montana and Southwest North Dakota								
NR17 - Northeastern North Dakota								

Legend

Significant Fire Potential

- No Data
- Little or no risk.
- Low risk
- Moderate risk

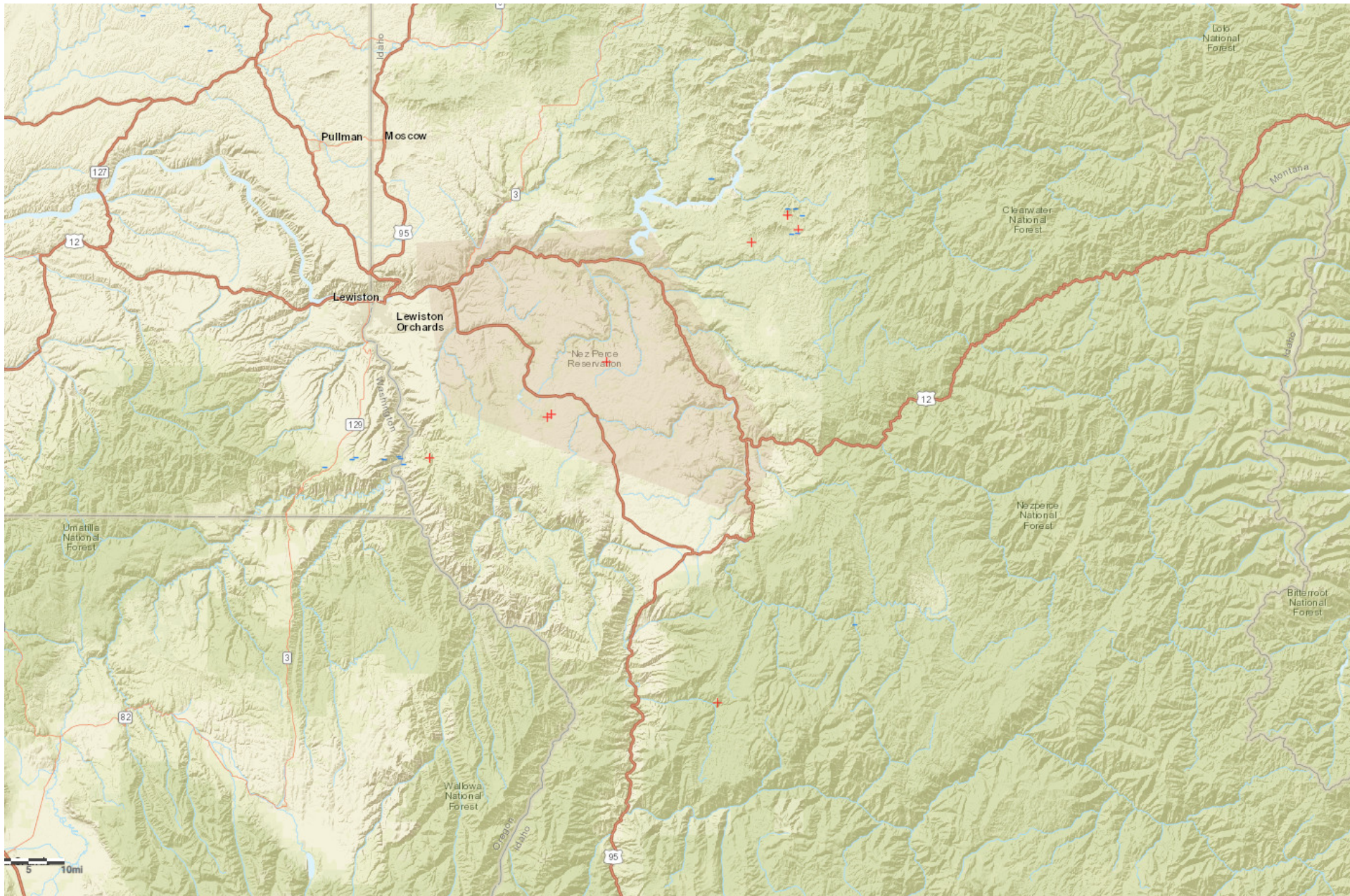
High Risk Triggers

- H
- W
- L

Version: 1.0.354.0

National Interagency Coordination Center
National Interagency Fire Center
3833 S Development Avenue, Boise, ID 83705

Lightning Map



Resource Availability

FEDERAL

PALOUSE RD 9/22

Resource	ICS Type	IROC Status	IA Availability	Location
Palouse HC2IA	T2IA	Nat'l - Cmt	InSvc	Midnight fire ID-CTF

NORTH FORK RD 9/22

Resource	ICS Type	IROC Status	IA Availability	Location
E-631	Engine T6	Nat'l - Cmt	InSvc	Hwy 113 Fire
631 Chase	IA Mod	Local - Avail	InSvc	Kelly
Canyon Alpha	IA Mod	Local - Avail	R&R	Canyon
Canyon Bravo	IA Mod	Local - Avail	InSvc	Canyon

LOCHSA RD 9/22

Resource	ICS Type	IROC Status	IA Availability	Location
E-642	Engine T6	Nat'l - Cmt	InSvc	Lookout Fire-Oregon
E-641	Engine T6	Local - Avail	OoS	Mechanical
Lochsa Charlie	IA Mod	Local - Avail	InSvc	Musselshell WC
Lochsa Alpha	IA Mod	Local - Avail	OoS	Kooskia
Brush Truck 644	Equipment (other)	Local - Avail	InSvc	Kooskia

POWELL RD 9/22

Resource	ICS Type	IROC Status	IA Availability	Location
E-671	Engine T6	Local - Avail	OoS	Powell
UT-671	Eqpt (Other)	Local - U/A	OoS	Powell
Goat Roost	IA Mod	Local - Cmt	InSvc	Palouse Crew Support

SALMON RIVER RD 9/22

Resource	ICS Type	IROC Status	IA Availability	Location
E-413	Engine T4	Local - Avail	InSvc	Slate Creek
E-612	Engine T6	Local - U/A	R&R	
E-614	Engine T6	Local - U/A	OoS	
Grangeville Alpha	IA Mod	Local - Avail	InSvc	Grangeville
4390	IA Mod	Local - Avail	InSvc	Clean Slate
1140	IA Mod	Local - Avail	InSvc	Crown Royal RX

Resource Availability

Grangeville Charlie	IA Mod	Local - Avail -	InSvc -	Grangeville
Grangeville Bravo	IA Mod	Local - Avail -	InSvc -	Grangeville
Grangeville Delta	IA Mod	Local - U/A -	OoS -	
5957	IA Mod	Local - Avail -	InSvc -	

MOOSE CREEK RD 9/22

Resource	ICS Type	IROC Status	IA Availability	Location
Selway WFM	Crew T1	Local - Cmt -	InSvc -	McCall RX
E-661	Engine T6	Local - Avail -	InSvc -	Fenn
Selway Charlie	IA Mod	Local - U/A -	OoS -	
Selway Bravo	IA Mod	Local - Cmt -	InSvc -	Alabama
Selway Alpha	IA Mod	Local - U/A -	OoS -	
Moose Creek Bravo	IA Mod	Local - U/A -	OoS -	
Moose Creek Alpha	IA Mod	Local - U/A -	OoS -	

RED RIVER RD 9/18

Resource	ICS Type	IROC Status	IA Availability	Location
Red River WSM	Crw (Other)	Local - Cmt -	InSvc -	Sisters, Oregon
E-651	Engine T6	Local - Avail -	InSvc -	South Township
E-652	Engine T6	Nat'l - Cmt -	InSvc -	Sisters, Oregon
Elk City IA (Jensen)	IA Mod	Local - U/A -	InSvc -	

GRANGEVILLE NCF/INTERAGENCY

Resource	ICS Type	IROC Status	IA Availability	Location
NCF FSR3 T2IA	T2IA	Local - U/A -	OoS -	

Resource Availability

STATE

CRAIG MOUNTAIN 9/22

Resource	ICS Type	IROC Status	IA Availability	Location
E 43-F-51	Engine T5	Local Avail	InSvc	Craigmont
E 43-F-52	Engine T5	Local Avail	InSvc	Craigmont
E 43-F-53	Engine T6	Local U/A	OoS	Craigmont

MAGGIE CREEK 9/21

Resource	ICS Type	IROC Status	IA Availability	Location
42F34	Engine T5	Local Avail	InSvc	Kamiah
42F32	Engine T5	Local Avail	InSvc	Kamiah
42F31	Engine T6	Local U/A	OoS	Kamiah

PONDEROSA 9/21

Resource	ICS Type	IROC Status	IA Availability	Location
Teakean	T2IA	Local Avail	InSvc	Deary
4152	Engine T5	Nat'l Avail	InSvc	Deary
4161	Engine T6	Local Avail	InSvc	Deary

IDL CREW

Resource	ICS Type	IROC Status	IA Availability	Location
IDS# 8 Crew	CR21	Local U/A	OoS	

Resource Availability

INTERAGENCY

CLEARWATER POTLATCH TIMBER PROTECTIVE ASSOCIATION 9/20

Resource	ICS Type	IROC Status	IA Availability	Location
490-06 D5H	Dozer T2	Local - Avail	InSvc	Orofino
T6 Engine 430-01	Engine T6	Local - Avail	InSvc	Headquarters
T6 Engine 430-21	Engine T6	Local - Avail	InSvc	Orofino
T6 Engine 430-13	Engine T6	Local - Avail	InSvc	Elk River
T2 Water Tender 480-08	Eqpt (Other)	Local - Avail	InSvc	Orofino

NEZ PERCE TRIBE 9/22

Resource	ICS Type	IROC Status	IA Availability	Location
Camp Crew 4	Crw (Other)	Local - U/A	R&R	
Camp Crew 2	Crw (Other)	Local - U/A	R&R	
E-24	Engine T5	Local - Avail	OoS	Lapwai
E-57	Engine T6	Local - Avail	OoS	Lapwai
E-61	Engine T6	Local - Avail	InSvc	Lapwai

COTTONWOOD BLM 9/18

Resource	ICS Type	IROC Status	IA Availability	Location

CURRENT INCIDENTS

Acres are updated every evening before the Morning Report is published.

Incident Number	Incident Name	Start Date	Latitude D,dM	Longitude D,dM	District	ICT	Strategy	Fire Phase	Acres
ID-CTS-000202	Elderberry	Jun 4, 2023	46, 30.8	116, 4.66	CTS	5	Full Suppr	N/A	1
ID-NCF-000220	Snowden	Jun 7, 2023	46, 42.63	115, 33.18	NFRD (1753)	5	Monitor	N/A	945
ID-NPT-000290	Woodyard	Jun 26, 2023	46, 22.59	116, 47.31	NPT	5	Full Suppr	N/A	0.1
ID-NCF-000308	Prospect Ridge	Jul 1, 2023	45, 56.26	115, 10.12	MOOSECRK (1706)	5	Monitor	N/A	2
ID-NCF-000321	Little Bear	Jul 3, 2023	46, 26.78	114, 53.57	POWELL (1756)	3	Monitor	N/A	1204
ID-NCF-000370	Midnight	Jul 9, 2023	45, 56.0	115, 45.0	SRRD (1701)	3	Full Suppr	Ext A	179
ID-NCF-000414	West Fork	Jul 17, 2023	46,30.26	114,58.54	POWELL (1756)	5	None	N/A	427
ID-NCF-000505	Wahoo Peak	Jul 29, 2023	46,9	116,41	MOOSECRK (1706)	N/A	Monitor	N/A	346
ID-NCF-000565	Louse PT	Aug 6, 2023	46,10.69	115,18.54	RRRD (1705)	N/A	Monitor	N/A	
ID-NCF-000637	Powers Creek	Aug 16, 2023	45, 31.0	115, 35.0	RRRD (1705)	5	Full Suppr	Ext A	5
ID-CTS-000655	Old Ahsahka	Aug 19, 2023	46,31.3	116,20.60	CTS	3	Full Suppr	Ext A	149
ID-NCF-000689	Jumbo Trail	Aug 27, 2023	45,33.18	115,41.25	RRRD (1705)	5	Full Suppr	IA	.1
ID-CTS-000702	Hospital	Aug 29, 2023	46,29.5	116,15.54	CTS	3	Full Suppr	IA	53
ID-NCF-000727	North Butte	Aug 31, 2023	45, 31.0	115, 51.41	SRRD (1701)	5	Monitor	IA	0.1
ID-NCF-000731	Three Prong	Aug 31, 2023	45, 48.69	115, 5.64	RRRD (1705)	5	Monitor	IA	1
ID-PDS-000772	Spud	Sep 7, 2023	46, 48.19	116, 32.28	PDS	5	Full Suppr	IA	0.25
ID-CTS-000801	Hydro	Sep 12, 2023	46, 22.95	115, 57.37	CTS	5	Full Suppr	IA	0.4
ID-NPT-000807	T Hill	Sep 12, 2023	46, 26.39	116, 48.87	NPT	5	Full Suppr	IA	0.25
ID-CTS-000817	Gold Rush	Sep 14, 2023	46, 32.18	116, 8.85	CTS	5	Full Suppr	IA	0.1
ID-PDS-000821	Treasure Grove	Sep 15, 2023	46, 57.71	116, 49.12	PDS	5	Full Suppr	IA	1.5
ID-NPT-000826	Ash Ave	Sep 18, 2023	46,24.55	116,48.36	NPT	5	Full Suppr	IA	1.5
ID-CMS-000828	Billygoat	Sep 18, 2023	46,11.62	116,32.6	CMS	5	Full Suppr	IA	0.1